

April 2022

## THE DMCU SCHOLARSHIP RETURNS...



### 2022 Scholarship Program

HELPING OUR MEMBERS ACHIEVE.

#### APRIL 15

Applications available online at [dmcu.com/scholarships](https://dmcu.com/scholarships) and in branches.

#### MAY 31

Applications and supporting materials are due.

#### JUNE 20

Winners will be selected and contacted.

#### AUGUST 1

Funds will be distributed to the winners.

This year, we will be awarding four (4) scholarships worth \$2,500 each to our most qualified applicants. Scholarships may be used for any accredited university, college, or trade school.

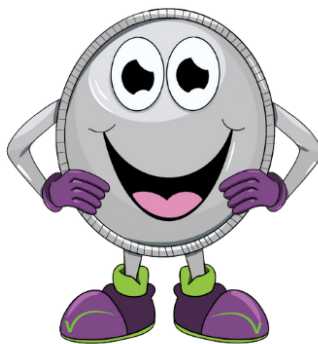
**High School Seniors:** We have three (3) scholarships available for graduating high school seniors.

**Continuing Education:** Not a high school senior but still need money to continue your degree? We've got you covered. DMCU will award one (1) of our scholarships to anyone pursuing continuing education.

*\*Must be a member in good standing to apply and receive scholarship.*

## HEY DMCU KIDS.....

We have a fun new way for kids to save. Stop by a DMCU branch and grab a quarter book. Once you fill it, you can bring it back, deposit it, and pick a prize! We have a treasure chest of little toys waiting for you.



D.M.C.U.  
quarter  
club

**DOES THAT SPECIAL CHILD IN YOUR LIFE HAVE A MY FUTURE SAVINGS ACCOUNT?** DMCU wants to help your child's savings grow. With a My Future Savings Account, we will deposit \$50 into your child's account each year on their birthday until they are 18. Stop in to open a My Future Savings today!

*\*Account must be open with \$100. Early withdrawal fees apply.*

## Fee Changes Effective June 1, 2022

Stop Payment (in online banking): \$15.00  
Returned Deposit Item (per presentment, includes electronic items): \$15.00  
Safety Box Lost Key: \$20.00  
Non-DMCU Credit Card Cash Advance: \$15.00  
Visa Rush Overnight (Card Only): \$55.00  
Debit Card and Pin Rush Overnight: Max \$200  
Account Research (per hour): \$30.00  
Balance Inquiry: \$1.00  
Garnishment and Levies (processing fee): \$75.00  
Cashier's Check: \$3.00  
Cashier's Check for Bills (free if payable to member): \$3.00  
Stop/Reissue Cashier's Checks/Money Order (min 90 days after issue): \$30.00  
Service Center/Shared Branch Transaction (after 5 transactions): \$2.00  
Statement Copy (free through online banking): \$3.00

## ANNUAL MEETING

The annual meeting will be held on May 17, 2022 at 5:00pm at the Detroit Main Branch.

The nominating committee met and the following incumbents are up for re-election:

### Board Members:

- ⇒ David Brooks III
- ⇒ Anthony Lamerato
- ⇒ Jerry Pokorski

### Supervisory Committee:

- ⇒ Allen Lewis

Members interested in volunteering as an official for DMCU can pick up an election petition at the Detroit Main office beginning April 1, 2022.

## **IT PAYS TO HAVE A GIVEBACK CHECKING...LITERALLY!**

Get rewarded for your purchases with DMCU's credit union rewards checking account, the Give Back Checking Account! Each month that you qualify, **you'll receive \$10 deposited to your checking account and refunds up to \$25 of ATM fees.** You will also receive points that can be used for gift cards and other cool merchandise.

**QUALIFICATIONS ARE EASY!** All you need to do to earn your monthly reward is:

- Have at least 15 debit card transactions post and settle
- Be enrolled in eStatements and online banking

*\*All accounts subject to approval. See disclosures for more details.*

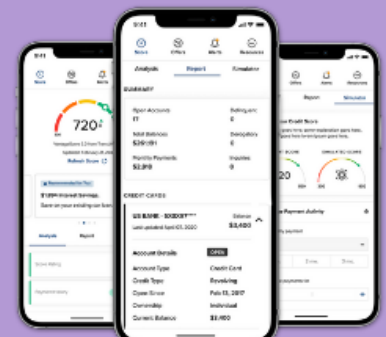


Sign-up for SavvyMoney within your DMCU online banking or mobile app.  
**It's free!**

This will help you track your score and will help you identify errors on your report.  
**Knowing is power!**

**1 OUT OF 3  
CREDIT REPORTS  
HAVE ERRORS**

**Sign up today!**



SAVE UP TO

**\$1,000**

OFF YOUR MORTGAGE  
CLOSING COSTS\*

**Diversified**  
MEMBERS CREDIT UNION

**MemberFirst**  
MORTGAGE

# HOMEBUYER SEMINAR

## YOU'RE INVITED!

Are you looking for your first home?  
Do you need help with figuring out financing?  
Don't know where to start?

Join us for a homebuyer seminar on April 27th! We'll have experts from our mortgage partner, Member First Mortgage, LLC, to answer all of your home financing questions. There will be opportunities for Q&A, informational materials, and plenty of other resources available.

**April 27, 2022**

**U.A.W LOCAL 7**

2600 Conner St., Detroit, MI 48215

5-7PM | FREE | Food & Refreshments Provided

By attending, you'll be entered to win great prizes!

# RSVP

**MAKE SURE TO RSVP SO WE  
KNOW TO SAVE YOU A SEAT!**

Registration 4:45 | Food 5:00 | Seminar 5:30

Web: [www.dmcu.com/mortgage-seminar](http://www.dmcu.com/mortgage-seminar)

Email: [marketing@dmcu.com](mailto:marketing@dmcu.com)

\*Available to all borrowers using a Conventional mortgage loan program on a purchase or refinance transaction with Diversified Members Credit Union (DMCU), NMLS ID# 1162028 and Member First Mortgage, LLC (MFM), NMLS ID# 149532 only. Eligible loan applications must be submitted between 5/1/2022 and 8/31/2022. Closing Cost discount amount is contingent on loan amount. Loan amounts \$100,000.00 and above are eligible for \$1,000.00 off closing costs; Loan amounts \$50,000.00-\$99,999.99 are eligible for \$500.00 off closing costs; Loan amounts \$25,000.00-\$49,999.99 are eligible for \$250.00 off closing costs. Closing cost discounts are not eligible for loan amounts less than \$24,999.99. Discount will not be applied until the time of closing on the appropriate closing documents. This promotion may not be combined with any other promotion or discount. DMCU reserves the right to cancel this promotion at any time without notice. All lending products are subject to credit and property approval. Terms, conditions, and interest rates are subject to change without notice. Certain restrictions may apply and may vary based on borrower qualification and collateral conditions. Refinancing an existing mortgage loan may cause the total finance charges to be higher over the life of the loan. This is not a commitment to lend. Member First Mortgage, LLC is an affiliate of Diversified Members Credit Union. Diversified Members Credit Union: 1480 E Jefferson, Detroit, MI 48207 | (313) 568.5000 | NMLS ID: 1162028. Member First Mortgage, LLC Corporate Office: 616 44th Street SE, Grand Rapids, MI 49548 | (866) 898.1818 | NMLS ID: 149532. Equal Housing Opportunity.



# Diversified

## MEMBERS CREDIT UNION

### LOCATIONS

#### Main Office/Drive Thru

1480 E. Jefferson Avenue • Detroit, MI 48207

#### HOURS

Mon: 8am-4:30pm, Tues-Thur: 8:30am-4:30pm

Fri: 8am-6pm, Sat: 9am-1pm

P 313.568.5000

General Fax 313.568.6170

Loan Dept. Fax 313.262.0155

#### Coleman A. Young Municipal Center

2 Woodward, Suite 118 • Detroit, MI 48226

See [www.dmcu.com](http://www.dmcu.com) for hours

P 313.202.9388 F 313.309.3430

#### Clawson

625 N. Main • Clawson, MI 48017

#### HOURS

Mon/Tues/Thur: 8:30am-4:30pm,

Wed: 8:30am-4pm, Fri: 8:30am-6pm

Sat: 9am-1pm

P 248.435.0950 F 248.435.7845

TF 800.482.2667

#### Novi

25880 Novi Rd. • Novi, MI 48375

#### HOURS

Mon-Tues: 9am-5pm, Wed: 8:30am-4pm,

Thurs: 9am-5:30pm, Fri: 8:30am-6pm, Sat: 9am-1pm

P 248.277.DMCU F 248.344.4316

## DMCU.COM

#### Credit Union Shared Branches & ATMs

[www.co-opnetwork.org](http://www.co-opnetwork.org)

888.287.9475



**Cu\*Talk** 800.860.5704 • Cu Id #166

**Routing & Transit #:** 272078297

**Xtend** [xtendcu.com/branches/find/xtend](http://xtendcu.com/branches/find/xtend)



## Rates Corner\*

As of 4/1/2022

	APY
Share Savings.....	0.10%
Sub Share Savings.....	0.10%
IRA.....	0.45%
(Roth and Traditional)	
HSA-Health .....	0.10%
Share Draft .....	0.05%
Christmas Club*** .....	0.30%
Vacation Club*** .....	0.30%
My Future Savings*** .....	0.35%

\*Subject to early withdrawal penalty. Fees may reduce earnings. Rates on CDs are subject to change without notice. Dividends on 6-month CDs are paid at maturity. All other CDs are paid on the quarterly anniversary of when the CD was opened. Rates subject to change at anytime.

CERTIFICATES OF DEPOSIT	
6 Months.....	0.40%
12 Months .....	0.60%
12 Months Save to win....	0.55%
24 Months .....	1.05%
36 Months .....	1.20%
60 Months .....	1.50%

MONEY MARKET	
	APY
\$2,500-\$24,999 .....	0.25%
\$25,000-\$49,999 .....	0.35%
\$50,000-\$99,999 .....	0.40%
\$100,000 and over .....	0.45%

\*\*APY=Annual Percentage Yield.

## COMMUNITY CORNER

**Top:** DMCU presented a \$500 donation to the Novi Police Benevolent Fund

**Middle:** DMCU presented a \$500 donation to Clawson Police & Fire

**Back:** DMCU presented a \$2,500 donation to the Detroit Association of Black Organizations



## HOLIDAYS

**Good Friday:** April 15 (branches close at noon)

**Holy Saturday:** April 16

**Memorial Day:** Saturday, May 28—Monday, May 30

**Juneteenth:** Monday, June 20

**Independence Day:** Saturday, July 2\* - Monday, July 4

### DO YOU HAVE A SAVE TO WIN?

Open a 12-month Save to Win Certificate and earn entries for every \$25 you save. You could win up to \$5,000 every quarter as well as up to \$100 on a monthly basis. You can earn up to 10 entries each month which gives you more chances to win.

\*Initial deposit is \$25. Early withdrawal penalties apply. See contest rules and disclosure.